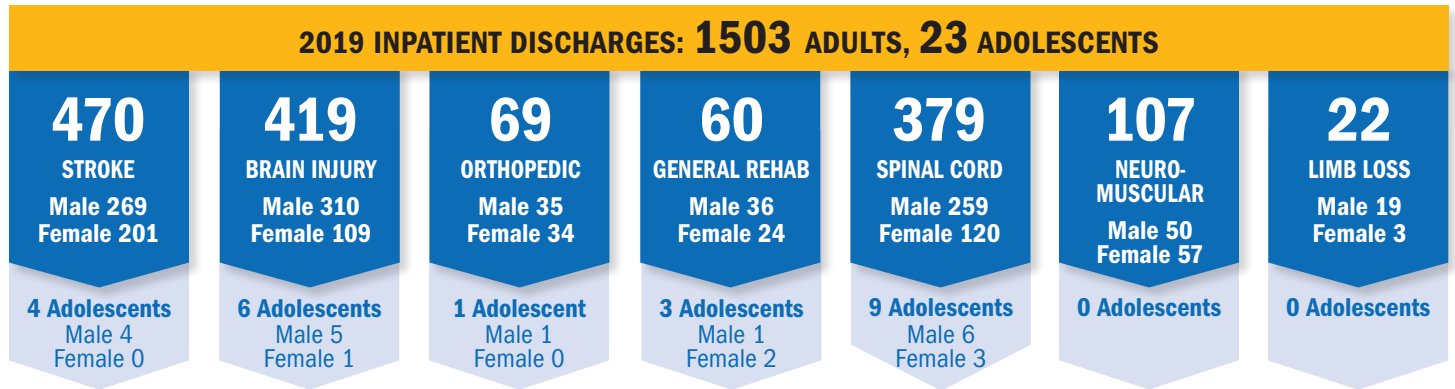


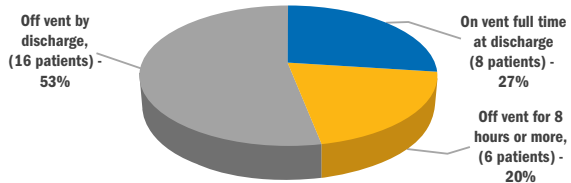
At TIRR Memorial Hermann, our patients come first. We provide care to individuals who are either recovering from injuries, or suffering from chronic diseases that have impaired their physical or cognitive functioning. Our hospital offers access to the most advanced, innovative rehabilitation services that focus on personalized, patient-centered care.

INPATIENTS SERVED IN 2019

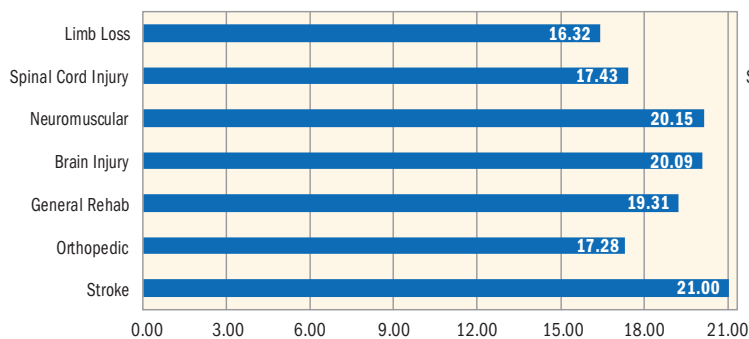


The TIRR Memorial Hermann Spinal Cord Injury (SCI) program is well known for its management of patients who require the use of a ventilator. While not all patients will be clinically appropriate for weaning, our goal is to wean SCI patients from the ventilator prior to discharge.

Vent Weaning Status (30 Patients)



Therapy Services

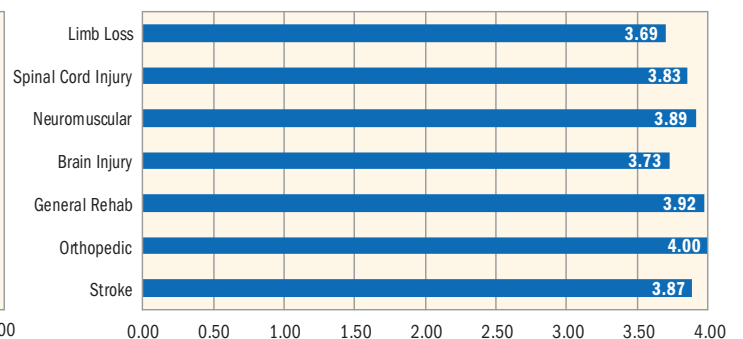


Individualized therapy
Shown in hours and minutes, per patient, per week
(Group therapy NOT included)

Additionally, the hospital's weekend program offers family education classes, group and leisure activities, provides additional therapy needs and allows for additional time needed for family training.

*Data obtained from e-Rehab. Stats include Medicare and Medicare Advantage patients only.

Patient Satisfaction



Overall satisfaction with the program
(Scale 0.00 - 4.00)

Patient satisfaction surveys are a means for measuring how effective our programs are with helping patients achieve more functional independence upon their return to their communities.

FY19: July 1, 2018–June 30, 2019. Data obtained from IT HealthTrack.

TIRR Memorial Hermann inpatient rehabilitation center is designed to help patients reach optimal functionality following an injury or illness. Personal performance goals are incorporated into a customized rehabilitation treatment program. Team members at TIRR Memorial Hermann are among the best trained and most experienced rehabilitation professionals.

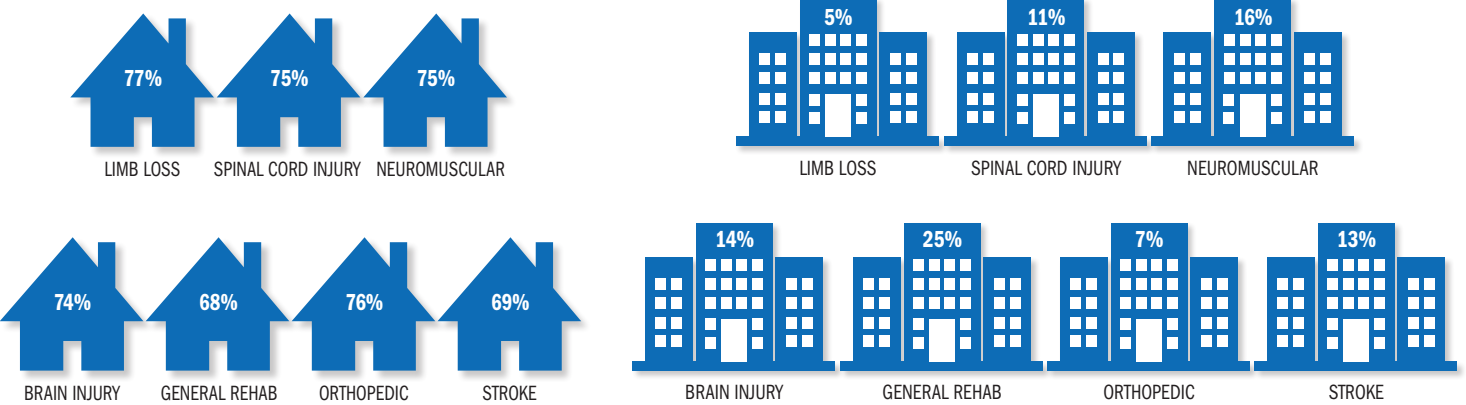
REHABILITATION OUTCOMES

The Functional Independence Measure (FIM) score is used to assess the progress of a patient’s functional skills such as dressing, bathing and eating. This score is measured upon admission and again right before discharge. The difference between the two scores is called the “FIM change.” This measure represents the patient’s functional gains achieved in response to an inpatient rehabilitation therapy program.



Gains achieved from admission to discharge

DISCHARGE LOCATION



Percentage of patients discharged to home or community

Percentage of patients discharged to an acute-care facility

Sometimes patients with medical complications have to return to an acute-care hospital for further medical care. When these transfers are not planned, they are unplanned acute-care transfers.

* Data from E-Rehab reporting for FY19 July 1, 2018–June 30, 2019

