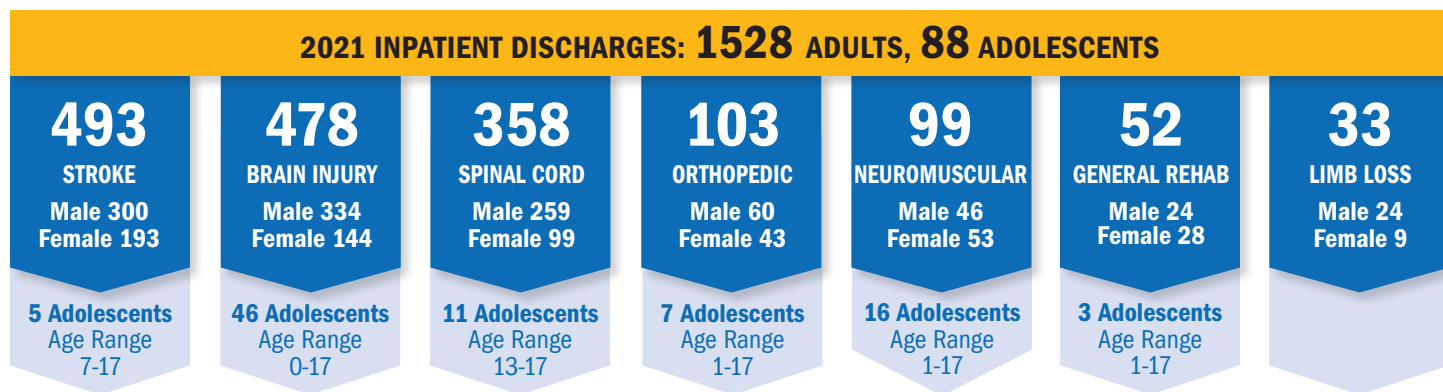


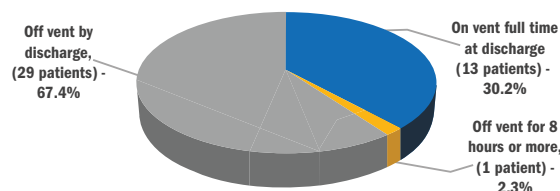
At TIRR Memorial Hermann, our patients come first. We provide care to patients who are either recovering from injuries, or suffering from chronic diseases that have impaired their physical or cognitive functioning. Our hospital offers access to the most advanced, innovative rehabilitation services available, with a focus on personalized, patient-centered care.

**INPATIENTS SERVED IN 2021**

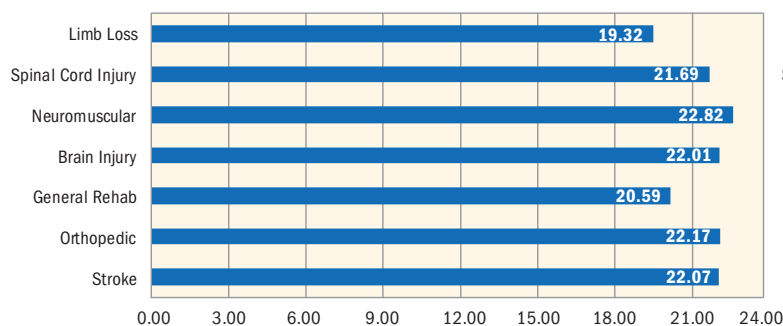


The TIRR Memorial Hermann Spinal Cord Injury (SCI) program is well known for its management of patients who require the use of a ventilator. While not all patients will be clinically appropriate for weaning, our goal is to wean SCI patients from the ventilator prior to discharge.

**Vent Weaning Status (43 Patients)**



**Therapy Services**

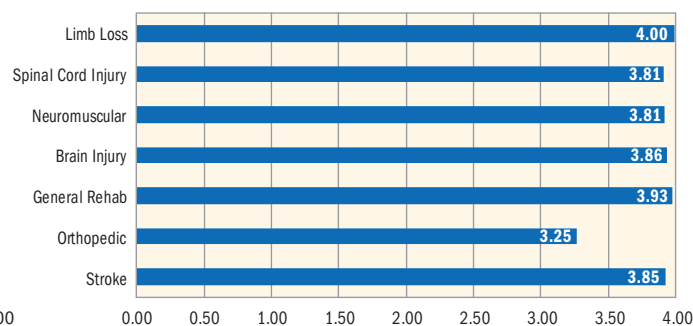


**Individualized & Group Therapy**  
Shown in hours and minutes, per patient, per week  
**ALL Patients**

Along with individual and group therapy sessions, the hospital's weekend program also offers classes focused on family education, and additional therapy needs; as well as, group and leisure activities, providing the necessary time and resources for our patients to achieve their discharge goals.

Data obtained from e-Rehab for reporting period CY2021. Stats include all patients.

**Patient Satisfaction**



**Overall satisfaction with the program**  
(Scale 0.00 – 4.00)

Patient satisfaction surveys are one of the ways we measure how effective our programs are in helping patients achieve their functional independence goals and return to their communities.

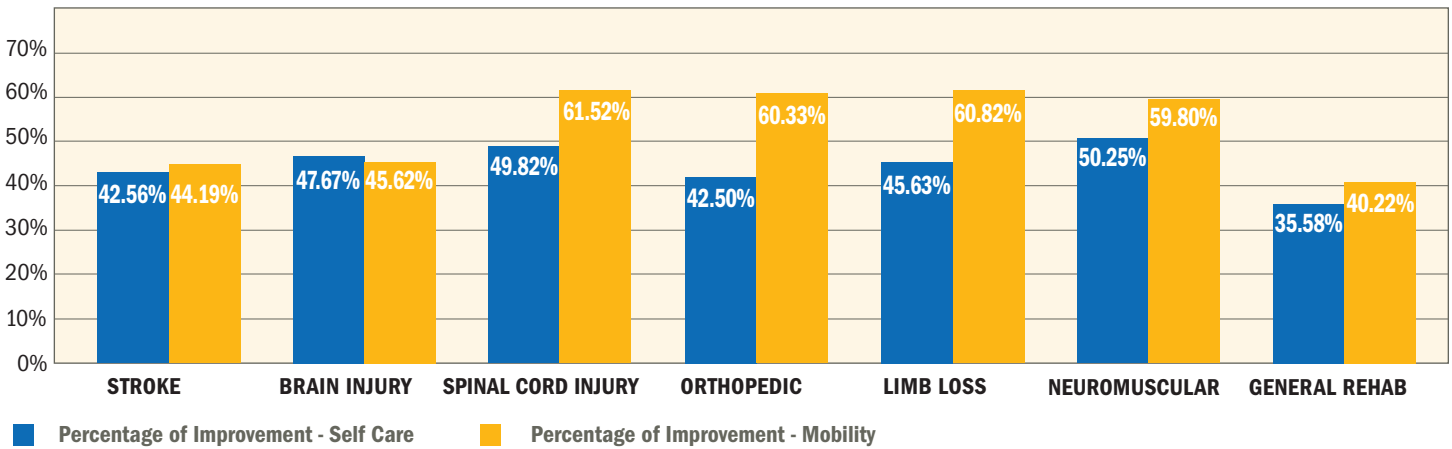
Data obtained from IT HealthTrack for the reporting period CY 2021. (over)

TIRR Memorial Hermann inpatient rehabilitation center is designed to help patients reach optimal functionality following an injury or illness. Personal performance goals are incorporated into a customized rehabilitation treatment program. Team members at TIRR Memorial Hermann are among the best trained and most experienced rehabilitation professionals.

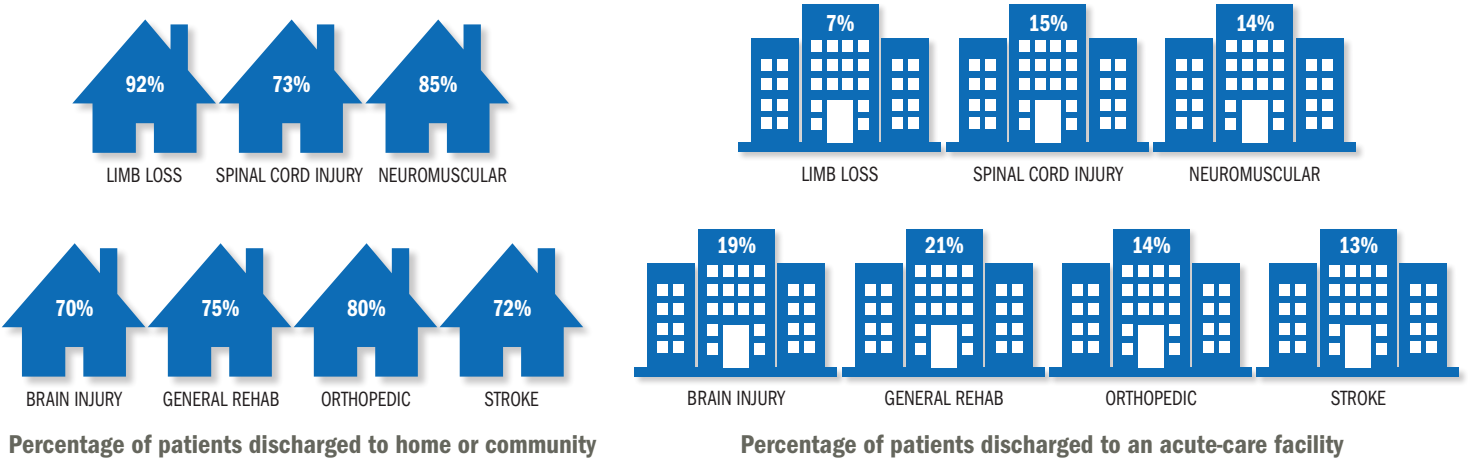
**REHABILITATION OUTCOMES**

The self-care and mobility outcome measures are used to assess the progress of a patient’s functional skills such as dressing, bathing and eating. They are also used to measure the effectiveness of rehabilitative care delivered by the rehab team; as well as, the effectiveness of the rehab program. This score is measured upon admission and right before discharge. The difference between the two scores represents the patient’s functional gains achieved in response to an inpatient rehabilitation therapy program.

**FUNCTIONAL IMPROVEMENTS FROM ADMISSION TO DISCHARGE**



**DISCHARGE LOCATION**



Data from E-Rehab reporting for the reporting period of CY2021.

Sometimes patients with medical complications have to return to an acute-care hospital for further medical care. When these transfers are not planned, they are defined as an unplanned acute-care admission.



1333 Moursund, Houston, TX 77030  
1 (800) 44-REHAB (73422) tirr.memorialhermann.org