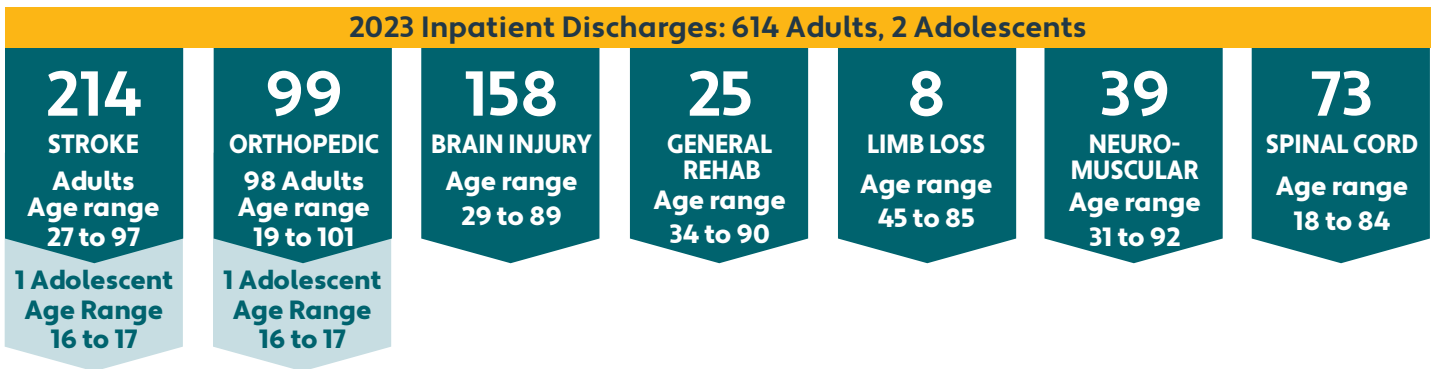


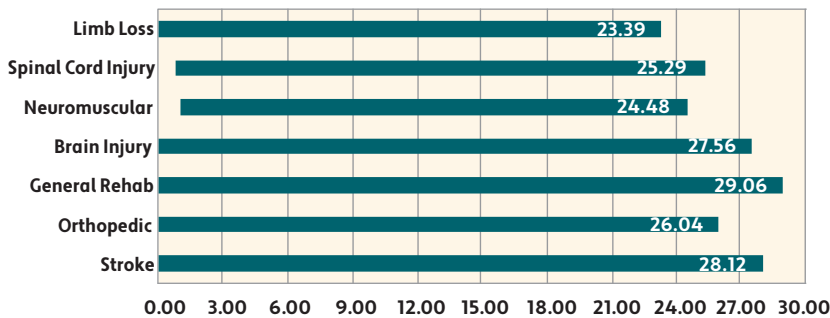
TIRR Memorial Hermann–The Woodlands

At TIRR Memorial Hermann-The Woodlands, our patients come first. We provide care to patients who are either recovering from injuries, or suffering from chronic diseases that have impaired their physical or cognitive functioning. Our hospital offers access to the most advanced, innovative rehabilitation services available, with a focus on personalized, patient-centered care.

Inpatients Served in 2023

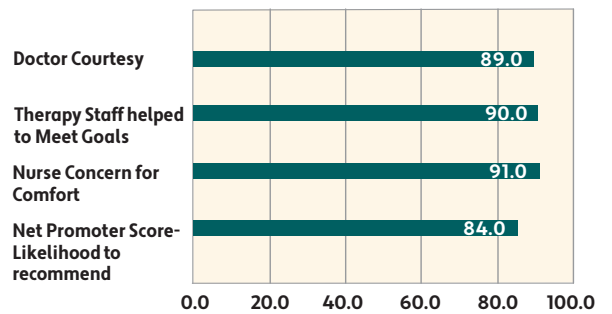


Therapy Services



Individualized and group therapy
Shown in hours and minutes, per patient, per week
All patients

Patient Satisfaction



Overall satisfaction with the program
(Scale 0.00 – 100.00)

The Net Promoter Score provides a snapshot of our patients overall experience and how likely they are to recommend our facility.

Data obtained from eRehabData for the reporting period of CY2023 and includes all discharge patients.

Data obtained from Qualtrics for the reporting period CY2023.

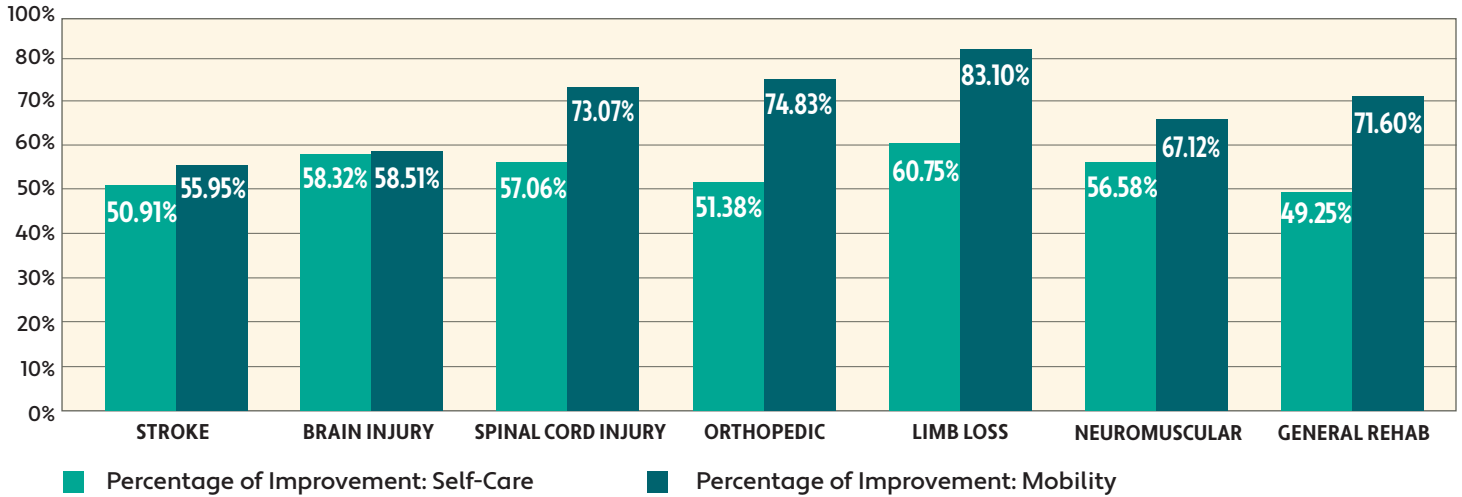
(over)

TIRR Memorial Hermann - The Woodlands inpatient rehabilitation center is designed to help patients reach optimal functionality following an injury or illness. Personal performance goals are incorporated into a customized rehabilitation treatment program. Team members at TIRR Memorial Hermann are among the best trained and most experienced rehabilitation professionals.

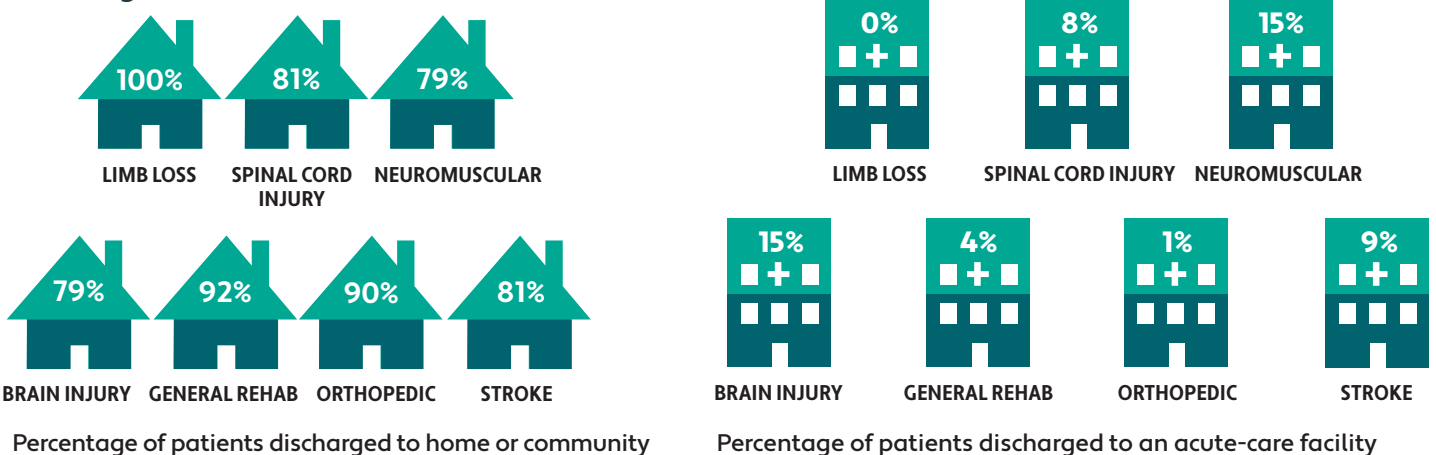
Rehabilitation Outcomes

The self-care and mobility outcome measures are used to assess the progress of a patient’s functional skills such as dressing, bathing and eating. They are also used to measure the effectiveness of rehabilitative care delivered by the rehab team; as well as, the effectiveness of the rehab program. This score is measured upon admission and right before discharge. The difference between the two scores represents the patient’s functional gains achieved in response to an inpatient rehabilitation therapy program.

Functional Improvements from Admission to Discharge



Discharge Locations



Sometimes patients with medical complications have to return to an acute-care hospital for further medical care. When these transfers are not planned, they are defined as an unplanned acute-care admission.

Data obtained from eRehabData for the reporting period of CY2023.



9250 Pinemcree Drive, The Woodlands, TX 77380
 1 (800) 44-REHAB (73422) tirr.memorialhermann.org